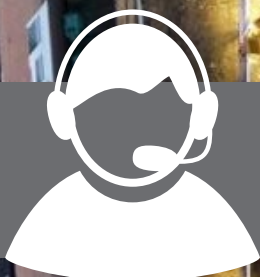


GROUND SHORE

PRODUCT BROCHURE

Providing Excavation Safety Solutions

Supporting Our Customers
To Create Safe Working Environments



**ON CALL TO SUPPORT OUR
CLIENTS 24/7 ON 0333 577 9111**

INTRODUCTION TO GROUNDSHORE

With locations throughout the UK and a full range of equipment across 13 equipment categories, GroundShore has the range and footprint to deliver when and where you need it 24/7/365.

GroundShore equipment comes backed by a dedicated team of product specialists and engineers covering everything from general equipment hire to special project requirements.

We want to earn the trust and support of our clients, but we also believe that it takes a shared ambition, a shared vision and a strong partnership to continue building a better future.

We are constantly seeking to explore, experiment and make things better. And this creates a resourcefulness that will achieve great outcomes around the county.

As a company, we have a duty to continually improve the effectiveness of our management systems and working practices to reflect this and ensuring we have a business model that is safe, customer focused, sustainable and quality driven.

GroundShore is committed to the continued progression of Occupational Health, Operational Safety, Sustainability and Quality of service, throughout the industry and as a matter of policy and working practice.

Using our Integrated Management System as an adaptable tool to drive forward a responsible and inclusive safety culture where the company and individuals take responsibility for their actions allows us to solve problems and offer safer, healthier solutions to the shoring industry that are sustainable for future generations.

We are here to help people who are giving it a go, with our expertise, our support and our equipment, so they can get out there to build more, build better and build more safely.

Let's work together to help build a better future.

Why GroundShore? To support our customers in creating a Safer Working Environment.

CONTENTS

Introduction	2	Pipe Lifters and Pipe Fingers.....	33
In-House Manufacturing Facility.....	3	Pipe Pushers	33
Training Facility.....	4	Manhole Ring Lifters.....	34
Groundshore Transport and Vehicle Hire	5	Culvert/Pipe Puller.....	34
Temporary Works Design	6	Manhole Shutters	35
Trench Box Systems.....	7	Road Plates.....	35
Lightweight Trench Box.....	8	Trench Struts.....	36
Standard Trench Box	9	Bog Mats and Plastic Ground Mats.....	36
Heavy Duty Trench Box	10	Pipe Stoppers	37
High Clearance Boxes	11	Ladders and Access.....	38
Manhole Boxes.....	12	Ladder Access Platforms	39
Drag Boxes.....	14	Wall Bridge and Staircase.....	40
End Protection Panels	15	Shaft Ladder	41
Edge Protection.....	16	Lifting Equipment.....	42
Hydraulic Bracing	19	Chains.....	43
Manhole Brace	20	Pitching Shackles.....	43
GS 203 Brace.....	21	Sheet Extractors	43
GS 305 Brace.....	22	Aluminium Light Weight Shoring	44
GS200 and GS300 Cross Struts.....	23	Aluminium Box System.....	45
Hydraulic Power Packs.....	24	Aluminium Waler System.....	45
Trench Sheets, Sheet Piles and Ancillaries	27	Confined Space Equipment	46
Lapped Trench Sheets.....	28	Davit System.....	47
Interlocking Sheet Piles	28	Stretcher	47
Sheet Ancillaries	29	Emergency Escape Apparatus.....	48
Movax Hire and Sheet Piling	30	Gas Detectors.....	48
GS 300 Excavator Mounted Vibrator.....	31	Our Core Values and Ethos	49
GS 450 Excavator Mounted Vibrator.....	32		

GROUNDSHORE SERVICE

Our Focus is providing solutions to customers' needs both current and future. We operate a 24/7/365 call out service to show our commitment to your needs when you require our services. We strive to ensure that our customers are provided with an excellent service that will assist in generating the best value for your money. We also believe that providing excellent customer service ensures that customers feel valued and know that we stand behind our employees.

We are focused on creating and maintaining mutually beneficial relationships with our stakeholders. Though proactive collaborations with stakeholders in the spirit of true partnership, we deliver premium value.

We are committed to working effectively as a team in order to deliver results far beyond individual capabilities.

- In-House design team
- In-House transport department
- In-House manufacturing
- Expert support
- National coverage
- On call 24/7/365

SAFETY, HEALTH, ENVIRONMENTAL AND QUALITY (SHEQ)

At GroundShore we understand that the SHEQ implications of our business activities affect our employees, customers, stakeholders and neighbours daily.

As a company, we have a duty to continually improve the effectiveness of our management systems and working practices to reflect this. Ensuring we have a business model that is safe, customer focused, sustainable and quality driven.

GroundShore are committed to the continued progression of Occupational Health, Operational Safety, Sustainability and Quality of service, throughout the industry and as a matter of policy and working practice.



IN-HOUSE MANUFACTURING FACILITY

Here at GroundShore we design and manufacture our full product range of equipment, providing second to none quality, product knowledge and the ability to meet customer demands at all times.

GroundShore Ltd is a growing business and we specialise in the production of shoring equipment and bespoke steel projects. With over 50 years of manufacturing experience within the team we can guarantee first-rate standards of quality and deliver excellent levels of service. Our manufacturing combines the best traditions of craftsmanship with up-to-date production techniques to produce the highest finish possible.

Our in-house design department can also design and then pass to manufacturing for very short turnaround deadlines when required. Using bespoke items and regular fleet items also provides the most cost effective and yet flexible excavation safety solutions for our customers.

Our experienced team of welders and fabricators work alongside our engineers and design team while following quality and safety procedures and legislation to produce simple to complex manufactured solutions as and when required.

This manufacture Facility enables GroundShore to be totally reactive at short notice to meet our customers' requirements, hence reducing the potential for delays, saving our customers time and expense.

Our fully qualified project engineers will conduct a detailed site survey on bespoke projects if required. This is a good opportunity for us to discuss ideas in more detail with you before beginning our design and drawings. We coordinate the mechanical and engineering drawings to exact specifications for the fabricator.

- A team of highly skilled welders and fabricators
- In-House manufacture of products
- Fast bespoke turnaround
- Quality products



TRAINING FACILITY

EUSR Categories 3, 4 & 5 - Install, Inspect & Remove Timber, Steel and Proprietary Excavation Support Systems. Our training centre is located at our Head Office in Sandbach.

This safety course introduces the learner to the theoretical and practical dangers of excavation work. Examples of areas covered are but not limited to the HSE's HSG150, HSG 47 guidance, the Construction Industry Research and Information Associations report.

Learners will become familiarised with the necessity for identifying various ground conditions, and will come to understand a variety of methods for utilising the appropriate ground retention system(s). This course also includes practical training and assessments while installing ground support systems in a live dig environment with a specific temporary works designs.

The two day course can accommodate up to 8 delegates per day.

Course Objectives:

Identify the dangers and hazards associated with working in excavations

Differentiate between soil types and conditions

Recognise suitable ground retention systems

Carry out risk assessments unique to excavations

Recognise the hazards, and implement control measures for those hazards

Be able to safely install, inspect, and remove timber, steel and proprietary shoring equipment with practical experience in doing so

Interpret specific temporary works designs

The minimum guided learning hours for a delivery combination of 3 Categories, such as EUSR Categories 3+4+5 is sixteen hours.

Certification

EUSR photo id card with qualification stated on the back of the card



GROUNDSHORE TRANSPORT AND VEHICLE HIRE

TRANSPORT

Groundshore have our own in-house transport fleet, equipped with a range of options from artic units with urban steer trailers to Hiab trucks.

Whether it's shoring or any other requirement, trust Groundshore for seamless logistics and top-notch service.



VEHICLE HIRE

We have a number of Toyota Hilux Invincible X available for contract hire!

Unmatched Durability: Built to conquer any terrain, this powerhouse is designed for the toughest challenges, offering superior strength and endurance.

Supreme Comfort: Experience a spacious and well-appointed cabin with advanced features that make every journey enjoyable. Apple CarPlay, Heated Seats, Full Leather and Automatic.

Cutting-Edge Technology: Stay connected and in control with the latest in automotive technology, ensuring your fleet is always ahead of the curve.

Impressive Style: Make a bold statement on the road with the Hilux's striking design, setting your business apart.

Contact us today to learn more about our contract hire options for the Toyota Hilux Invincible X

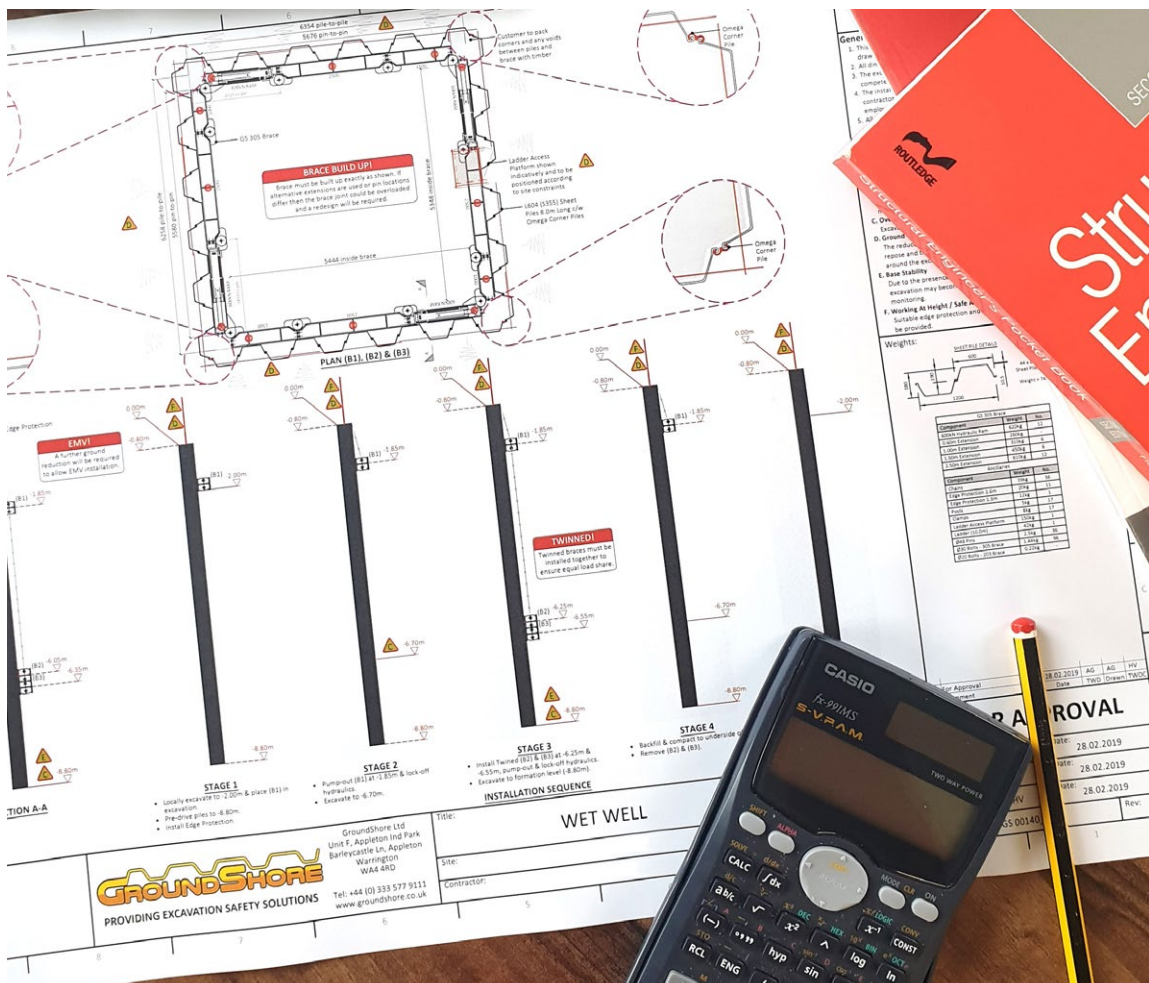


TEMPORARY WORKS DESIGN

GroundShore Ltd are market leaders in the provision of complex excavation support and specialised Temporary Works Designs Services to the UK construction industry. We are a complete support solution, established to assist with the management of all aspects of Temporary Works. We are highly motivated, responsive and driven by finding the right Temporary Works solutions for all our customers. We have a team of specialist engineers, experienced in designing, planning and implementing temporary works schemes of all sizes and complexity.

GroundShore use the latest software and current standards to facilitate design and checking. Our typical services will include:

- Wide range of shoring designs from Pipe Trenches to Deep Basement Propping
- Cantilever and Multi-Propped Retaining Walls
- Bespoke design and manufacture of temporary works solutions
- Supports / Foundations for temporary Works
- Piling Mats / Platforms
- Pipe Supports
- Thrust Walls
- Timber Shoring Designs
- Temporary Platforms
- Temporary Works Co-ordinator Services
- Cat 1, 2 & 3 Checks



TRENCH BOX SYSTEMS

At GroundShore we have trench box systems to suit all applications. We have in stock a large range of sizes to meet your requirements.

Trench boxes are used for speedy shoring of trench runs. Together with Drag Boxes and Manhole Boxes they provide a swift and easy way of holding the ground stable in a trench without the need to use any other shoring equipment.



LIGHTWEIGHT TRENCH BOX

Groundshore Lightweight trench boxes are mainly used for shallow trenches such as water pipes, cable ducts, sewer house connections and equivalent. Lightweight Struts are fixed to the box plates by two steel pins to allow an inner trench width of 570-2300 mm.

- Two sided mechanical trench excavation support system
- Normally selected for installing utility pipes and services where the control of ground movement is non-critical
- Designed to be installed by excavator using either the dig and push or excavate and place technique
- Bottom cutting edge for ease of installation
- Top panels available to increase excavation depth

SPECIFICATIONS

Description	Length (mm)	Height (mm)	Plate Thickness (mm)	Inside Strut Clearance (mm)	Strut Clearance (mm)	Safe Working Load (kN/m ²)	Weight Per Box (kg)
Base	3000	2000	60	2600	950	31.9	910
Top	3000	1000	60	2600	-	31.9	500
Base	3500	2000	60	3100	950	27.3	1030
Top	3500	1000	60	3100	-	27.3	550

Struts	Closed	Opened	Weight
Standard	570	760	9.5
Extensions		500	5.5



STANDARD TRENCH BOX

Standard Trench Boxes are used for medium size projects and are a combination of standard duty box plates with our heavy duty strut system. Heavy Duty Struts are fixed to the box plates by a single steel pin to allow an inner trench width of 500-3600 mm.

- Two sided mechanical trench excavation support system
- Normally selected for installing utility pipes and services where control of ground movement is non-critical
- Designed to be installed by excavator using either the dig and push or excavate and place technique
- Bottom cutting edge for ease of installation
- Top panels available to increase excavation depth

SPECIFICATIONS

Description	Length (mm)	Height (mm)	Plate Thickness (mm)	Inside Strut Clearance (mm)	Strut Clearance (mm)	Safe Working Load (kN/m ²)	Weight Per Box (kg)
Base	3000	2000	60	2600	1000	45.4	1340
	-	-	-	-	1300	39.2	-
Top	3000	1400	60	2600	-	45.4	910
Base	3500	2400	60	3100	1000	34.2	1700
	-	-	-	-	1300	28.2	-
Top	3500	1400	60	3100	-	34.2	1010

Struts	Closed	Opened	Weight
Standard	1000	1300	65.0
Extension		300	13.3
Extension		500	18.8
Extension		1000	31.5
Extension		1500	47.5
Rigid		500	20.0
Rigid		600	23.0
Rigid		700	26.0
Rigid		800	29.0



HEAVY DUTY TRENCH BOX

Heavy Duty Trench Boxes are used for medium size projects and are a combination of heavy duty box plates with our heavy duty strut system. Heavy Duty Struts are fixed to the box plates by a single steel pin to allow an inner trench width of 500-3600 mm.

- Two sided mechanical trench excavation support system
- Normally selected for installing utility pipes and services where control of ground movement is non-critical
- Designed to be installed by excavator using either the dig and push or excavate and place technique
- Bottom cutting edge for ease of installation
- Top panels available to increase excavation depth

SPECIFICATIONS

Description	Length (mm)	Height (mm)	Plate Thickness (mm)	Inside Strut Clearance (mm)	Strut Clearance (mm)	Safe Working Load (kN/m ²)	Weight Per Box (kg)
Base	3500	2400	107	3100	1300 1500	65.4 56.3	2270 -
Top	3500	1400	107	3100	-	56.3	1360
Base	4000	2400	107	3600	1300 1500	57.2 49.3	2460 -
Top	4000	1400	107	3600	-	49.3	1545

Struts	Closed	Opened	Weight
Standard	1000	1300	65.0
Extension		300	13.3
Extension		500	18.8
Extension		1000	31.5
Extension		1500	47.5
Rigid		500	20.0
Rigid		600	23.0
Rigid		700	26.0
Rigid		800	29.0



HIGH CLEARANCE TRENCH BOX

High Clearance Heavy Duty Trench Boxes are used for medium size projects and are a combination of heavy duty box plates with our heavy duty strut system and High Clearance Strut Adaptors.

- Two sided mechanical trench excavation support system
- Normally selected for installing utility pipes and services where control of ground movement is non-critical
- Designed to be installed by excavator using either the dig and push or excavate and place technique
- Bottom cutting edge for ease of installation
- Top panels available to increase excavation depth
- Under Strut Clearance 2400mm

SPECIFICATIONS

Description	Length (mm)	Height (mm)	Plate Thickness (mm)	Inside Strut Clearance (mm)	Strut Clearance (mm)	Safe Working Load (kN/m ²)	Weight Per Box (kg)
Base and Top	3500	3800	107	3100	2400	65.4	5080
Top	3500	1400	107	3100	-	56.3	1360
Base and Top	4000	3800	107	3600	2400	57.2	5455
Top	4000	1400	107	3600	-	49.3	1545

Struts	Closed	Opened	Weight
Standard	1000	1300	65.0
Extension		300	13.3
Extension		500	18.8
Extension		1000	31.5
Extension		1500	47.5
Rigid		500	20.0
Rigid		600	23.0
Rigid		700	26.0
Rigid		800	29.0



MANHOLE BOXES

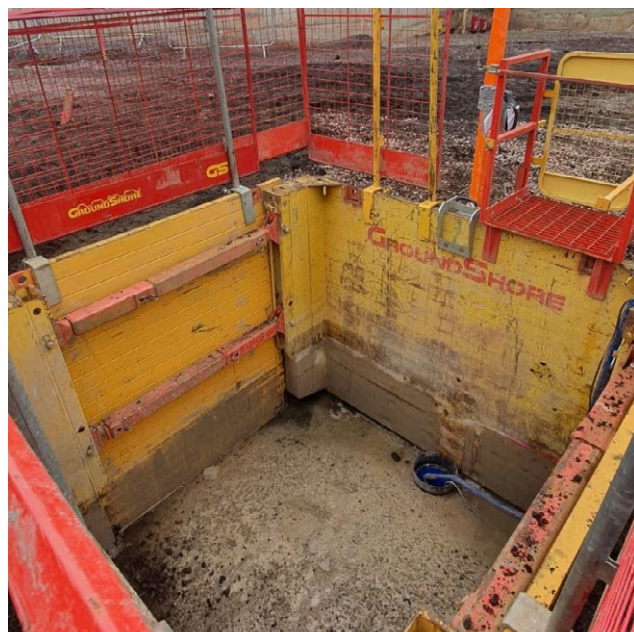
Manhole Boxes are used for medium size projects and are a combination of box plates with our heavy duty strut system. Heavy Duty Struts are fixed to the box plates by a single steel pin.

- Solid and hard wearing - ensures maximum safety
- Normally selected where control of ground movement is non-critical
- Designed to be installed by excavator using either the dig and push or excavate and place technique
- Bottom cutting edge for ease of installation
- Top panels available to increase excavation depth

SPECIFICATIONS

Description	Length (mm)	Height (mm)	Plate Thickness (mm)	Inside Strut Clearance (mm)	Strut Clearance (mm)	Safe Working Load (kN/m ²)	Weight Per Box (kg)
Base	2000	2000	60	1600	900	45.0	1390
Top	2000	1100	60	1600		45.0	840
Base	2500	2400	60	2100	1300/1500	55.4/39.4	1890
Top	2500	1400	60	2100		55.4	1160
Base	3000	2400	60	2600	1300/1500	45.4/32.9	2085
Top	3000	1400	60	2600		45.4	1255
Base	3500	2400	60	3100	1300/1500	34.3/28.2	2225
Top	3500	1400	60	3100		34.3	1350
Base	4400	2500	100	4100	1300/1500	45.0/35.0	3400
Top	4400	1300	100	4100		45.0	2110

Struts	Closed	Opened	Weight
Standard	1000	1300	65.0
Extension		300	13.3
Extension		500	18.8
Extension		1000	31.5
Extension		1500	47.5
Rigid		500	20.0
Rigid		600	23.0
Rigid		700	26.0
Rigid		800	29.0





WWW.GROUNDSHORE.CO.UK

DRAG BOXES

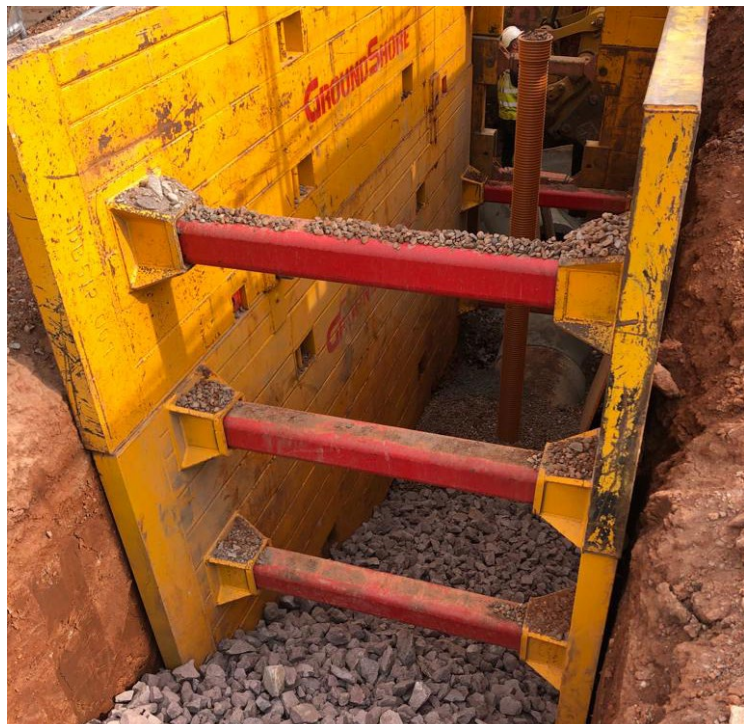
Groundshore Drag Boxes are used for medium size projects and are a combination of box plates with our heavy duty strut system. Heavy Duty Struts are fixed to the box plates by a single steel pin.

- Solid and hard wearing
- Easy to assemble
- Widths up to 5m using telescopic struts
- Top panels available
- Cutting edge on front and bottom to enable ease of drag
- Under strut clearance up to 2.2m

SPECIFICATIONS

Description	Length (mm)	Height (mm)	Plate Thickness (mm)	Inside Strut Clearance (mm)	Strut Clearance (mm)	Safe Working Load (kN/m ²)	Weight Per Box (kg)
Base	3000	2400	100	2400	1200	40.0	1950
Top	3000	1200	100	2400		40.0	1100
Base	5000	2400	100	4200	1350	40.0	3200
Top	5000	1200	100	4200		40.0	1650
Base	5000	3250	100	4200	2200	30.0	4750
Top	5000	1200	100	4200		30.0	1650
Base	7500	2500	100	6600	1500	20.0	5900
Top	7500	1200	100	6600		20.0	3000
Base/Top	7500	2000	100	6600	1500	20.0	4700

Struts	Dimension	Weight
Rigid	800	43.0
Rigid	1000	53.4
Rigid	1200	64.0
Inner	750	40.0
Inner	1050	56.0
Inner	1650	88.2
Outer	1200	65.8
Outer	1700	92.3
Outer	2000	108.5



END PROTECTION PANELS

- Easy to assemble
- Used to close off end of trench/excavation against ends of trench or manhole boxes
- Two lifting points on each edge of panel
- Maximum two panels can be joined together using two connector plates and M30 x 110 bolts and nuts
- Can be used in any orientation

SPECIFICATIONS

Description	Length (mm)	Height (mm)	Plate Thickness (mm)	Safe Working Load (kN/m ²)	Weight (kg)
End Panel	1200	1200	60	45.0	144
End Panel	1800	1200	60	45.0	168
End Panel	2400	1200	60	45.0	280
End Panel	2400	1800	60	45.0	410
End Panel	2400	2400	60	45.0	525
End Panel	3000	2400	60	45.0	590



EDGE PROTECTION

At GroundShore Safety is paramount and we only utilise the latest and innovative solutions when it comes to safety. Our system is the latest technology designed with the customers economy and flexibility in mind.

GroundShore's Edge Protection is a full safety system that can be fitted to trench shoring equipment which includes Guard Barriers, Posts and Clamps.

It can be provided to suit your site specific requirements. Immediate and safe edge protection system to trench lining and piling sheet profiles and to the top profile section of ground shoring boxes.



EDGE PROTECTION SYSTEMS

GUARD BARRIERS

- Two sizes available: 2.6m (20kg) and 1.3m (12kg) long x 1.3m high guard barrier
- 4mm mesh thickness, 75mm x 75mm pitch centres
- 10mm central stiffening bars
- Galvanised mesh and frame, powder coated for durability
- Rigid frame design construction
- Interlocking sections
- Top and bottom frame profiles angled for added strength
- Integrated 225mm toe board housed and welded within external frame

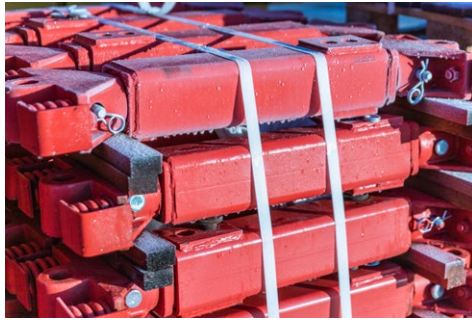
POSTS

- Support Safety Post 5kg
- Robust, lightweight galvanized steel construction
- Positioned up to 2.4m max centres
- Housing detail locks guard barrier in both top and bottom positions
- Housing latch locking detail creates positive and secure locking
- Twin locking safety mechanism
- Easy fixing and striking from arms length

CLAMPS

- Groundworks Clamp 8kg
- 0-200mm adjustment range
- Provides an immediate and safe edge protection system to trench lining and sheet piling
- Attaches to ground shoring boxes
- Mechanical Clamp
- Interchangeable with flexible adjustment





HYDRAULIC BRACING

GroundShore's hydraulic bracing system is a strong, durable and modular system. It can be configured to satisfy multi-sided excavations in conjunction with trench sheets or sheet piles to form a wide variety of shapes. UC Braces are fabricated from grade S460 steel sections and quickly assembled to create desired brace lengths using simple pin and clip/bolt and nut connections.

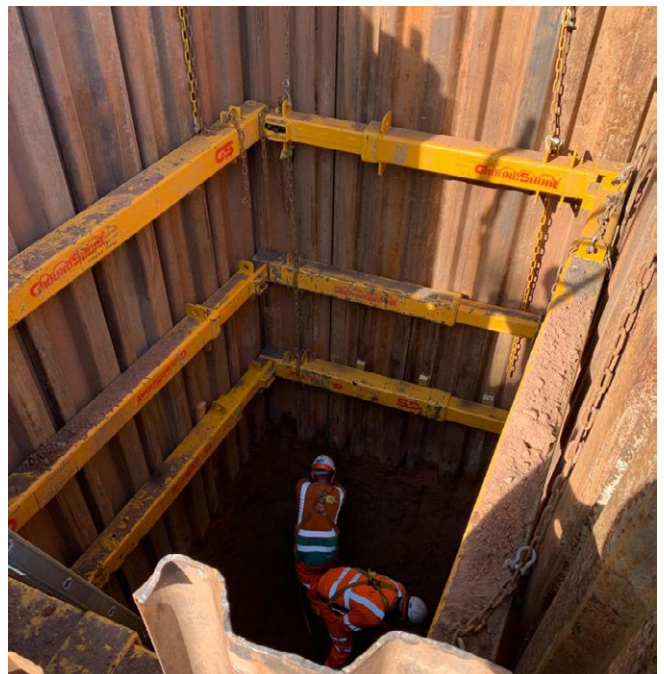


MANHOLE BRACE

- Four sided hydraulic brace
- For smaller cofferdams in sizes ranging from 0.95m to 6.0m
- Hydraulic cylinder incorporated in each brace leg for adjustment of brace size
- Lightweight Hydraulic System
- 180 x 180 x 10 SHS outer
- 150 x 150 x 12.5 SHS inner
- Steel Grade S355J2H

SPECIFICATIONS

Description	Type	Weight (Kg)	Size
GS Micro Manhole Brace	Double acting	120	1100mm to 1400mm
GS Mini Manhole Brace	Double acting	190	1400mm to 2000mm
GS A Leg Manhole Brace	Single Acting	120	1900mm to 2900mm
GS A Leg Manhole Brace	Double acting	240	2000mm to 3000mm
GS B Leg Manhole Brace	Double acting	300	3000mm to 4000mm
GS C Leg Manhole Brace	Double acting	350	4000mm to 5000mm
GS D Leg Manhole Brace	Double acting	375	5000mm to 6000mm



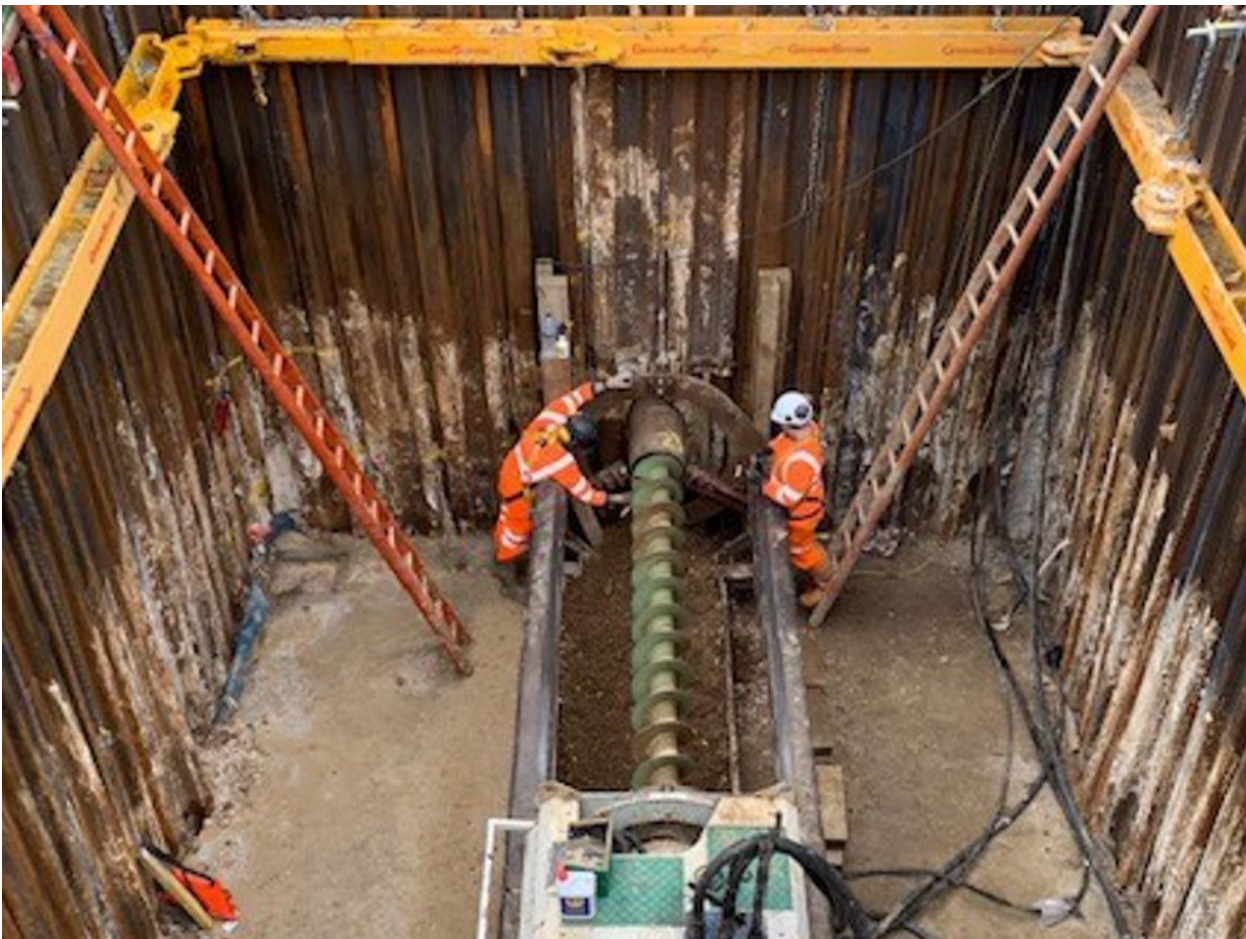
GS 203 BRACE

- Medium duty brace for pits ranging from 2.3m - 9.0m clear opening
- Double acting hydraulic ram combines with a range of fixed length extensions to form a frame
- Multi-sided hydraulic brace
- Cross struts can be used to gain additional length
- Ideal for thrust pits, large manholes, pipe installations etc.
- 203 x 203 x 86 UC
- Steel Grade S460

SPECIFICATIONS

Description	Pin to Pin Dimensions		Weight (kg)	Hydraulic Ram (kN)
	Min (mm)	Max (mm)		
GS 203 Ram	1742	2742	360	150

Description	Weight (kg)
GS 203 0.6m Extension	80
GS 203 1.0m Extension	130
GS 203 2.0m Extension	260
GS 203 3.0m Extension	380
GS 203 4.0m Extension	510
GS 203 5.0m Extension	630



GS 305 BRACE

- Heavy duty brace for cofferdams ranging from 2.1m - 14.0m clear opening
- Double acting hydraulic power pack combines with a range of fixed length extensions to form brace leg
- Multi-sided hydraulic brace
- Cross struts can be used to gain additional length
- Ideal for tank installations, deep excavations, basement propping, etc.
- 305 x 305 x 158 UC
- Steel Grade S460

SPECIFICATIONS

Description	Pin to Pin Dimensions		Weight (kg)	Hydraulic Ram (kN)
	Min (mm)	Max (mm)		
GS 305 Ram	1538	2338	620	600

Description	Weight (kg)
GS 305 0.6m Extension	260
GS 305 1.0m Extension	310
GS 305 1.5m Extension	610
GS 305 2.5m Extension	910
GS 305 6.0m Extension	1210



GS200 AND GS300 CROSS STRUTS

- Medium/Heavy duty strut system
- Compatible with GS Manhole Braces, GS 203 and GS 305 brace systems (as a cross strut)
- Steel Grade S355J2H

SPECIFICATIONS

Description	Dimensions		Weight (kg)	Hydraulic Ram (kN)
	Min (mm)	Max (mm)		
200 Section Cross Strut	1655	2655	300	300
300 Section Cross Strut	1268	2068	475	600

GS200 Extensions	Weight (kg)
0.5m Extension	60
1.0m Extension	84
2.0m Extension	130
3.0m Extension	178
4.0m Extension	223
5.0m Extension	270

GS300 Extensions	Weight (kg)
0.5m Extension	165
1.0m Extension	215
2.0m Extension	310
3.0m Extension	405
4.0m Extension	500
5.0m Extension	600



HYDRAULIC POWER PACK

- Intended to be used to extend and retract rams for braces and struts
- Used in conjunction with GS 203, GS 305 braces and 200 series cross struts
- All cases have four lifting points for chains and pockets to be moved by FLT
- Petrol or Diesel powered
- Electric or pull start

SPECIFICATIONS

Description	Power @ 3000RPM (KW)	Weight (kg)	Capacity (L)
Hydraulic Power Pack	6.5	450	150

DOUBLE ACTING BUCKET PUMP

- Intended to be used to extend and retract rams for braces and struts
- Used in conjunction with GS Manhole Brace, GS 203 Brace and GS 200 series cross struts

SPECIFICATIONS

Description	Weight (kg)
Double Acting Bucket Pump	20

SINGLE ACTING BUCKET PUMP

- Intended to be used to extend rams for walers and struts
- Used in conjunction with aluminium shoring systems

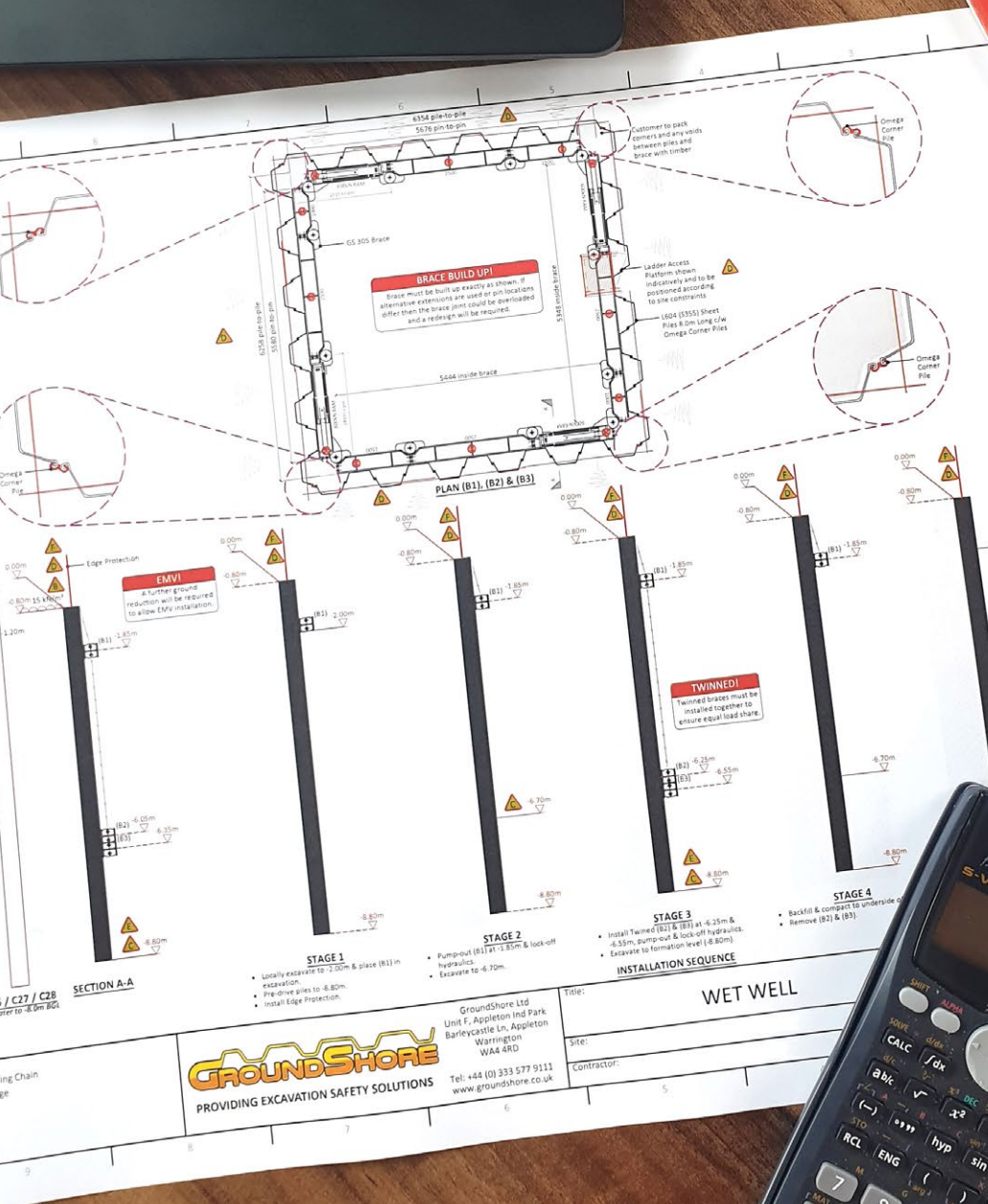
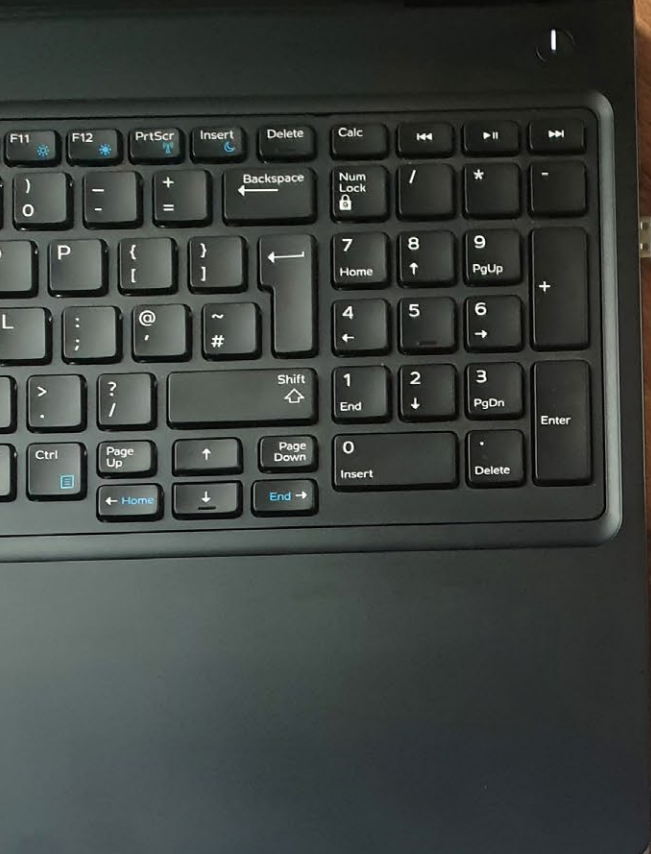
SPECIFICATIONS

Description	Weight (kg)
Single Acting Bucket Pump	20

SHORING FLUID

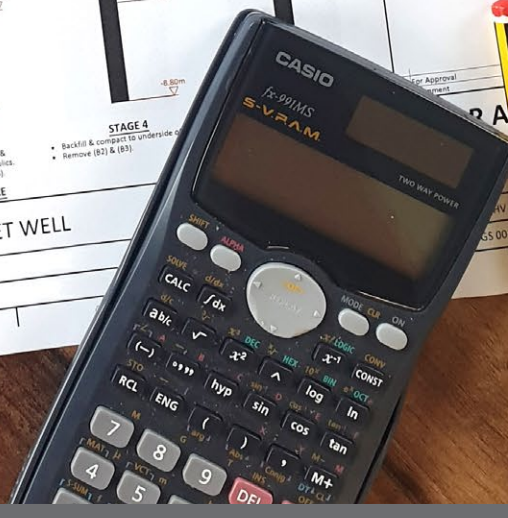
- Available in sealed 5L bottles





WEIGHTS

Component	Weight	Qty
GS 905 Brace	100kg	16
Omega Corner Pile	200kg	11
Edge Protection 2.0m	15kg	11
Edge Protection 1.5m	10kg	11
Edge Protection 1.0m	5kg	11
1.50m Extension	15kg	11
1.00m Extension	10kg	11
400mm Hydraulic Pump	15kg	1
Ladder (2000mm)	15kg	1
GS 905 Pin	1.5kg	11
GS 905 Pin Box	1.5kg	11
GS 905 Pin	1.5kg	11
GS 905 Pin Box	1.5kg	11



APPROVAL

Date	AG	AG	HW
28.02.2019	TWD	Green	TYWC
28.02.2019			
28.02.2019			

Rev: A1

TRENCH SHEETS, SHEET PILES AND ANCILLARIES

GroundShore have in stock a wide range of overlapping and interlocking sheet piles. Trench sheets are most commonly used for shoring up excavation & ground works. Trench sheets & sheet piles are primarily designed to be handled and installed by excavators.

We have in stock a full range of trench sheets and accessories to help deliver your projects more quickly, safely and efficiently.



LAPPED TRENCH SHEETS

STANDARD LAP TRENCH SHEETS

Profile-thickness:	3.4 mm
Profile-width:	330 mm
Profile-weight:	10.80 kg/m
Section-modulus:	48.3 cm ³ /m



TRENCH SHEET KD 400/6

Profile-thickness:	6.0 mm
Profile-width:	400 mm
Profile-weight:	22.23 kg/m
Section-modulus:	99 cm ³ /m



TRENCH SHEET KD 600/6

Profile-thickness:	6.0 mm
Profile-width:	600 mm
Profile-weight:	37.50 kg/m
Section-modulus:	184 cm ³ /m



TRENCH SHEET KD 600/8

Profile-thickness:	8.0 mm
Profile-width:	600 mm
Profile-weight:	50.00 kg/m
Section-modulus:	237 cm ³ /m



INTERLOCKING SHEET PILES

LARSEN SHEET PILES

Profile-thickness:	8.2-16.5 mm
Profile-width:	600 mm
Profile-weight:	54.0-95.0 kg/m



OMEGA CORNER PILES

Minimum-angle:	90°
Maximum-angle:	135°
Profile-weight:	18 kg/m



FLP 600/6

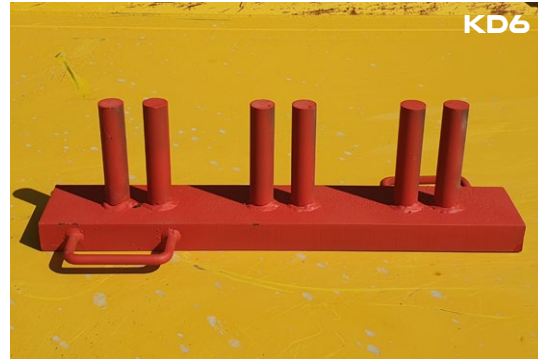
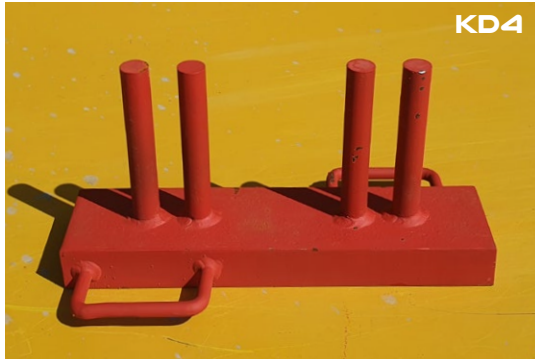
Profile-thickness:	6.0 mm
Profile-width:	600 mm
Profile-weight:	38.80 kg/m
Section-modulus:	306 cm ³ /m



SHEET ANCILLARIES

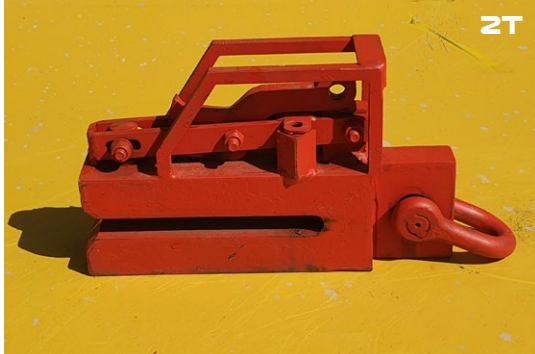
DRIVING CAPS

Description	Weight (kg)
Std Lap Driving Cap	12
KD4 Driving Cap	15.5
KD6 Driving Cap	22.5



PITCHING SHACKLES

Model and Description	Depth (mm)	Width (mm)	WLL (kg)	Weight (kg)	Pin Dia (mm)
2T Quick Release Shackle	210	20	2000	20	26
6T Quick Release Shackle	210	20	6000	26	36



SHEET EXTRACTORS

Model and Description	Depth (mm)	Width (mm)	WLL (kg)	Weight (kg)	Pin Dia (mm)
2T Sheet Extractor	210	20	2000	18	26
6T Sheet Extractor	210	20	6000	24	36



GROUNDSHORE MOVAX HIRE AND SHEET PILING

GroundShore has made significant investments in 2023, acquiring G.H.M.'s Movax hire fleet and securing the largest, most advanced side grip Movax SG-80VA in the UK.

We will have the following available:

35t with SG-80VA + DH25

27t with SG-50V

35t with SG-60V

30t with SG-50V

We can drive or extract Sheet Piles, H-section and Tubes.

With our recent investment in the latest Movax technology and boasting the largest Movax unit in the UK, paired with our new top-of-the-line equipment, we're primed to deliver unparalleled quality work.

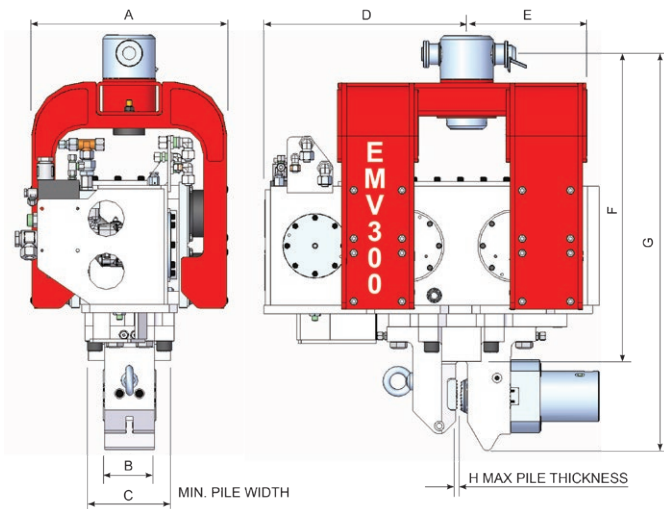
All our excavators come fitted with Prolac slew and height restrictors.

Reach out today to explore how Groundshore can elevate your sheet piling projects!



GS300 EXCAVATOR MOUNTED VIBRATOR

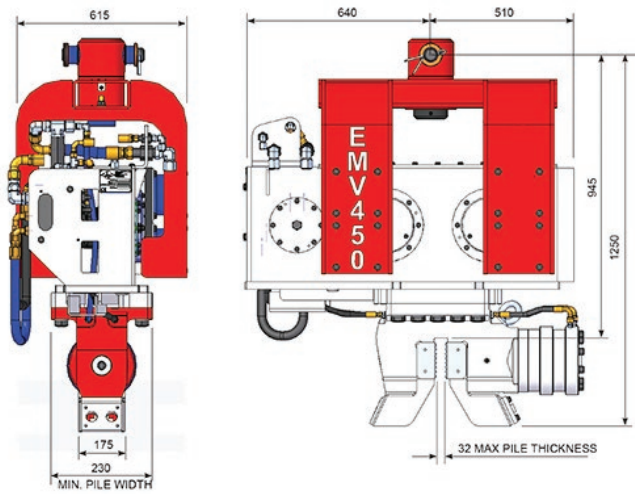
Specifications		GS300 EMV	
Units		Metric	US
Static Moment		4.6 kgm	400 in lbs
Frequency		2400rpm	
Centrifugal Force		300KN	67,420 lbs.F
Amplitude		14.7 mm	0.58 in
Min. Hydraulic Flow Rate		130 L/min	35 gpm
Max. Hydraulic Flow Rate		250 L/min	67 gpm
Max. Hydraulic Pressure		350 bar	5,076 psi
Min. Hydraulic Power		60 kW	80 hp
Dynamic Mass		625 kg	1,380 lbs
Total Mass		965 kg	2,123 lbs
Max. Pile Mass		800 kg	1,760 lbs
Max. Push/Pull Force		15,000 kg	33,000 lbs
Clamp Force		36 Tonne	
Typical Excavator Weight		12 - 35 Tonne	13 - 39 Ton
EMV Weight With Oil		975kg	2,145 lbs
EMV Stand		112 kg	247 lbs
EMV70 Adaptor Bracket		33kg	73 lbs
Quick Hitch - 4586		100 kg	220 lbs
Transport Weight		1,220kg	2,685 lbs



Dimensions	A	B	C	D	E	F	G	H
mm	615	150	250	582	429	927	1200	25
in	24.2	6	10	23	17	36.5	47.25	1

GS450 EXCAVATOR MOUNTED VIBRATOR

Specifications	GS450 EMV	
Units	Metric	US
Static Moment	6.9 kgm	600 in lbs
Frequency	2460rpm	
Centrifugal Force	453KN	100,000 lbs.F
Amplitude	13.7 mm	0.54 in
Min. Hydraulic Flow Rate	195 L/min	52 gpm
Max. Hydraulic Flow Rate	350 L/min	94 gpm
Max. Hydraulic Pressure	350 bar	5,076 psi
Min. Hydraulic Power	88 kW	118 hp
Dynamic Mass	1.008 kg	2,240 lbs
Total Mass	1.275 kg	2,834 lbs
Max. Pile Mass	1,000 kg	2,240 lbs
Max. Push/Pull Force	15,000 kg	33,600 lbs
Clamp Force	54 Tonne	
Typical Excavator Weight	25 - 45 Tonne	27 - 50 Ton
EMV Weight With Oil	1,416kg	3,116 lbs
EMV Stand	142 kg	313 lbs
EMV70 Adaptor Bracket	33kg	73 lbs
Quick Hitch - 4586	195 kg	390 lbs
Transport Weight	1,786kg	3,895 lbs



Dimensions	A	B	C	D	E	F	G	H
mm	615	32	230	640	510	945	1250	175
in	24	1.25	9	25	20	37	49	6.9

PIPE LIFTERS AND PIPE FINGERS

- Designed as an excavator attachment solely for use in the lifting and laying of concrete pipes
- All moving parts are mechanical and do not require an excavator to have additional details
- 30-degree tilt for guiding the pipe into position
- Swivel plate allows the pipe lifter to turn at 90-degree intervals

SPECIFICATIONS

Description	Pipe Dimensions	Max Length (mm)	Weight (kg)	Safe Working Load (kg)
Pipe Lifter	DN300-DN1200	2500	660	3700
Pipe Lifter JCB Q-Fit	DN300-DN1200	2500	760	3700
Pipe Lifting Finger	various		365	2500
Pipe Lifting Finger	various		650	7500
Pipe Lifting Finger	various		1100	10000



PIPE PUSHERS

- All moving parts are mechanical and do not require an excavator to have additional details
- Adjustable width setting using various extensions
- Suitable for all quick hitch pin sizes

SPECIFICATIONS

Description	Pipe Dimensions	Minimum Width (mm)	Maximum Width (kg)	Weight (kg)
Groundshore Pipe Pusher	DN300-DN1650	700	2150	270



MANHOLE RING LIFTERS

- Universal manhole and clone clamp
- An additional operator is not necessary as the driver of the lifting machine switches the lifter from gripping to releasing by a slight movement of the lifting hook
- Suitable for manhole basers, rings and cones with inner diameters of 625/800/1000/1050/1200/1350/1500 mm
- High-tensile chain suspension with eyelet
- Efficient and economic handling of all kinds of manhole elements



SPECIFICATIONS

Description	Surcharge for nominal width (mm)	Weight (kg)	Safe Working Load (kg)
Manhole Ring Lifter	625 - 1500	148	2500

CULVERT/PIPE PULLER

- Safe and fast joining of reinforced concrete pipes and culverts
- No trailing cables through battery operation
- Tensioning and pulling by push button control via hydraulic cylinders
- Pulling operation via polyester sling – therefore, no injuries
- Tensioning within the pipe at any point
- Easy movement on 4 wheels within the pipe
- Adjustable maximum pressure of the hydraulic installation
- Simple adjustment to suit the required nominal width via spindle or exchange of the support
- Large clamping surfaces prevent damage to the inside wall of the pipe
- Pressure and battery are controlled by check gauges
- Easy release of the pipe puller within the pipe after the pulling operation via the hydraulic cylinder



SPECIFICATIONS

Description	Pipe/Culvert size	Weight (kg)	Maximum Pulling Force (kg)
Culvert/Pipe Puller	1000mm - 3000mm	625	16000



MANHOLE SHUTTERS

- Manhole shutters to fit internal ring diameters from 675mm to 3000mm

SPECIFICATIONS

Internal Ring Diameter (mm)	A	B	C
675	1	3	0
900	2	2	0
1050	3	0	1
1200	3	1	1
1350	3	2	0
1500	3	3	0
1800	4	2	0
2100	4	4	0
2400	6	1	0
2700	7	0	0
3000	7	1	1



ROAD PLATES

All Road Plates manufactured in the UK and undergo a vigorous manufacturing and finishing process that includes three hours of shot blasting. Ensuring no moisture settles on the steel plate, prior to the application of the high friction surfacing system.

SPECIFICATIONS

Description	Length (mm)	Width (mm)	Weight (kg)
Smooth Plate	2400	1200	480
Anti-Skid Plate	2400	1200	480
Anti-Skid Plate/Center Lift	2400	1200	480
Anti-Skid Plate/Center Lift	3000	1200	730



TRENCH STRUTS

- Ideal for timber shoring applications
- Available in four sizes

SPECIFICATIONS

Strut Type	Strut Length (mm)	Working load Capacity (kN)	Strut Weight (kg)
Type 0	300 - 500	30	5.0
Type 1	500 - 700	30	6.6
Type 2	700 - 1100	30	8.6
Type 3	1000 - 1800	30	11.8



ADJUSTABLE PROPS

- Durable props for general applications
- Available in five sizes

SPECIFICATIONS

Prop Type	Prop Length (mm)	Working load Capacity (kN)	Strut Weight (kg)
Type 0	1000 - 1800	30	13.6
Type 1	1800 - 3100	20	21.0
Type 2	2000 - 3300	20	21.8
Type 3	2600 - 4000	15	25.0
Type 4	3200 - 4900	12	29.5



BOG MATS

We have an extensive inventory of Bog Mats, available for both hire and sale.



PLASTIC GROUND MATS

Our engineered plastic ground mats are designed for peak performance, combining lightweight convenience with exceptional functionality. Whether you require temporary access roads, pedestrian walkways, or event flooring, we've got the ideal solution to meet your ground matting needs.

2.4m x 1.2m



PIPE STOPPERS

Vetter inflatable blanking stoppers are the optimum solution for achieving quick and reliable sealing of drainage channels, pipework and sewers.

Vetter Inflatable Pipe Stoppers (also known as Sealing Bags) are quickly inflated to plug sewers, keep toxic liquids leaking from tanks or boilers, and to prevent polluted water run-off from fire-fighting operations.

Vetter Sealing Bags can also keep the sewer system ecologically clean by guarding it against the inflow of hazardous liquids.

We supply an array of Vetter inflatable stoppers for sale and hire, each of which can accommodate a range of pipe diameters from 100 mm to 1400 mm. For each size there are two versions: a complete blank stopper for holding back flow or pressure, and a bypass bag which, when combined with the appropriate couplings can be used for air testing, water testing, over-pumping or fluming.



LADDERS AND ACCESS

For the majority of excavations ladders are required to access the excavations safely. There are many types of ladders, available in different lengths and materials.

GroundShore offer a wide range of Ladders including Tuffsteel, Timber Pole and GRP ladders.

GroundShore provide the highest quality British products that are certified to British Standards. All ladders are tested to the latest manufacturing specifications of BS2037 Class 1, BS1129 or BS EN131.



LADDERS

Certified to BS EN131 and tested to Class 1 strength criteria.

- 3.0m Tuffsteel Ladders – 12.0kg
- 4.0m Tuffsteel Ladders – 17.0kg
- 5.0m Tuffsteel Ladders – 22.0kg
- 6.0m Tuffsteel Ladders – 27.0kg
- 7.0m Tuffsteel Ladders – 32.0kg
- 8.0m Tuffsteel Ladders – 37.0kg
- 3.0m Timber Ladders – 10.0kg
- 4.0m Timber Ladders – 14.0kg
- 5.0m Timber Ladders – 18.0kg
- 6.0m Timber Ladders – 22.0kg
- 7.0m Timber Ladders – 26.0kg
- 8.0m Timber Ladders – 30.0kg



LADDER ACCESS PLATFORMS

GroundShores ladder access platforms integrate with all our box systems and trench sheets. Our platform entry systems are ideal for all types of boxes and sheeted pits and shafts where our cantilevered platforms enable safe side entry. Ladders fit directly to the unit for safe access and egress in and out of excavations.

There are two sizes available, our Standard Ladder Access Platforms ideal for all types of boxes and sheeted pits and shafts and our Maxi Ladder Access Platform ideal for interlocking sheet piles.

SPECIFICATIONS

Description	Length (mm)	Width (mm)	Height (mm)	Weight (kg)
Standard Ladder Access Platform	720	800	1065	86
Maxi Ladder Access Platform	1270	1480	1050	135



WALL BRIDGE

Double sided ladder access platforms, designed to transverse over tall concrete walls

- adjustable clamp jaw range from 200mm to 800mm
- secure ladder clamp
- designated lifting points



STAIRCASE

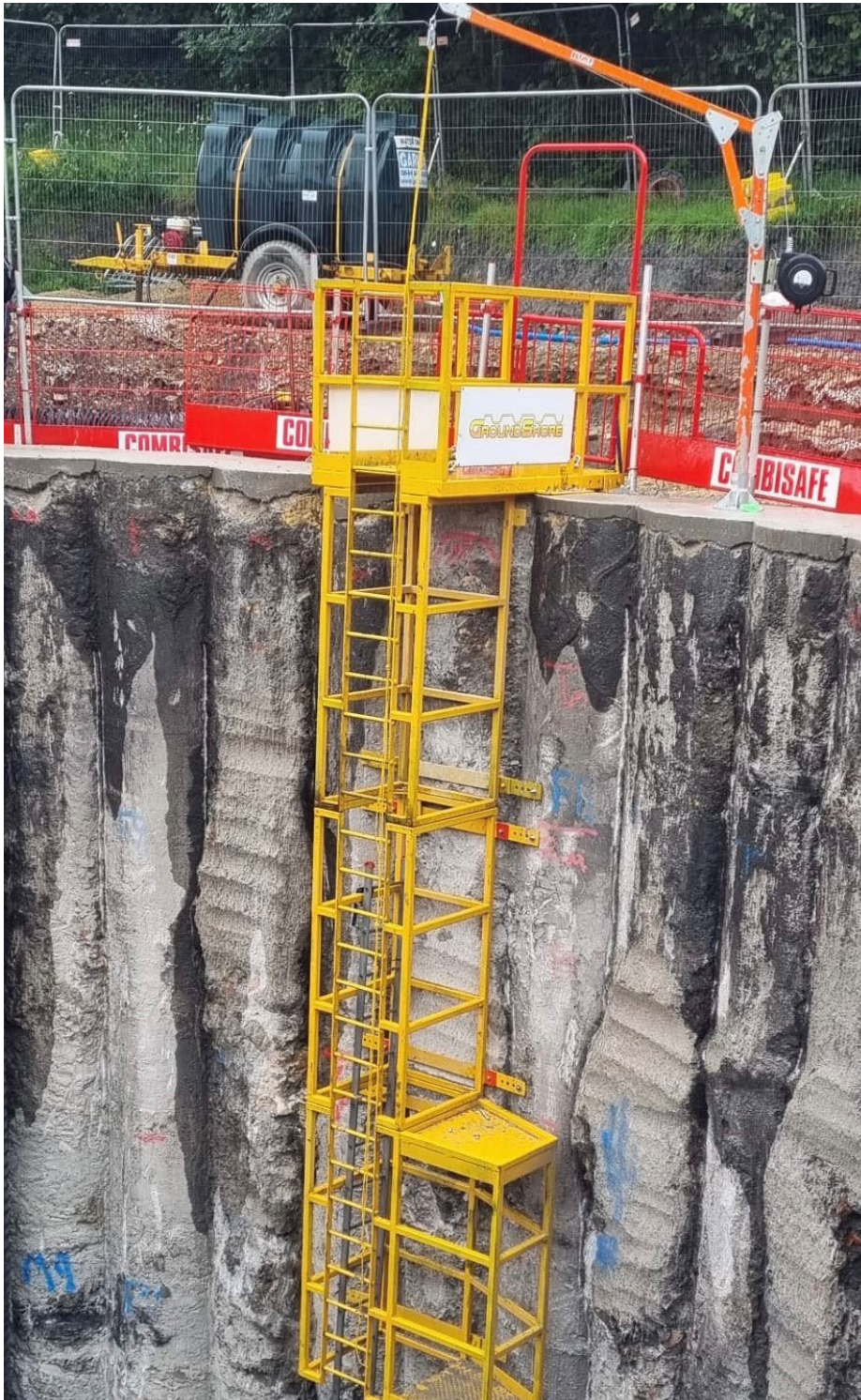
- Models range from 3 to 18 step configurations and several height adjustment ranges.
- Safe access between floors, decks and in excavations.
- Replacement parts and add-ons available for embellishing your system's functionality.
- Folds flat for easy transportation.
- 500kg SWL



SHAFT LADDER

Developed for concrete shafts and caissons, the system comprises heavy duty steel modular components which are readily installed by bolting multiple units together to the desired depth and then bolting the ladder modules to the concrete shaft wall using suitable anchor bolts.

- Controlled entry to deep shafts up to 30m
- Modular, bolted components
- Entry platform, ladder sections & rest landings
- Quick & easy installation



LIFTING EQUIPMENT

To complement the core range of shoring equipment, GroundShore offers a wide choice of lifting equipment. All the equipment supplied is meticulously tested to current standards and the range offered ensures you're able to satisfy all ground-work requirements of your mission.



CHAINS

- Range of single, 2 leg, 3 leg and 4 leg lifting chains
- Inspected and certified in accordance with LOLER
- Load capacities from 5.3 to 10.0 tonnes
- Leg lengths from 2.5m to 5.0m
- Bespoke chains made to order
- Not to be used for extracting or snatching



Model and Description	Load Capacity (t)	Length (mm)	Weight (kg)	Shortening Clutches
Standard Duty 2 - Leg Chain	6.3	2500	21	-
Standard Duty 4 - Leg Chain	6.7	2500	32	-
Long Leg Standard Duty 4 - Leg Chain	6.7	5000	60	Yes
Heavy Duty 2 - Leg Chain	10	5000	39	Yes
Single Leg Swivel Chain	5.3	800	11	-

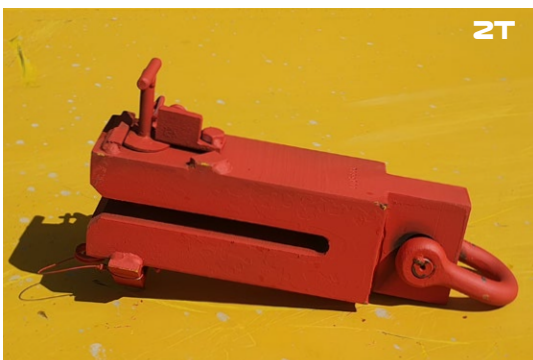
PITCHING SHACKLES

Model and Description	Depth (mm)	Width (mm)	SWL (kg)	Weight (kg)	Pin Dia (mm)
2T Quick Release Shackle	210	20	2000	20	26
6T Quick Release Shackle	210	20	6000	26	36



SHEET EXTRACTORS

Model and Description	Depth (mm)	Width (mm)	SWL (kg)	Weight (kg)	Pin Dia (mm)
2T Sheet Extractor	210	20	2000	18	26
6T Sheet Extractor	210	20	6000	24	36



ALUMINIUM LIGHT WEIGHT SHORING

At GroundShore we recognise the requirement to utilise lightweight shoring in areas where conventional shoring is not suitable. We offer a full range of lightweight shoring from Aluminium trench boxes to Aluminium walers and struts.



ALUMINIUM BOX SYSTEM

SPECIFICATIONS

Description	Length (mm)	Height (mm)	Weight (kg)
0.5m Aluminium Box	2000	500	70
1.0m Aluminium Box	2000	1000	140
1.5m Aluminium Box	2000	1500	210
2.0m Aluminium Box	2000	2000	280



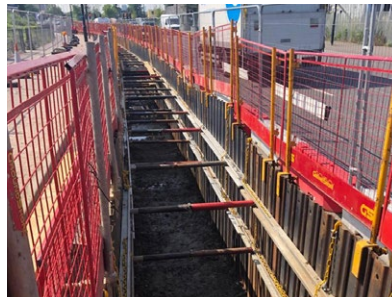
ALUMINIUM WALER SYSTEM

Simple to assemble, two sided, hydraulic bracing system designed to be used with steel trench sheets to horizontally brace small trenches. Aluminium waler rails available in various lengths to suit the application. Struts comprise of single acting hydraulic cylinders which can be combined with fixed length strut extensions to achieve trench widths (sheet to sheet) of between 650mm to 3800mm.

SPECIFICATIONS

Description	Length (mm)	Clearance (mm)	Weight (kg)
1.5m Aluminium Waler	1500	920	18
2.0m Aluminium Waler	2000	1320	24
2.5m Aluminium Waler	2500	1720	30
3.0m Aluminium Waler	3000	2020	36
4.0m Aluminium Waler	4000	2520	48
5.0m Aluminium Waler	5000	3000	62
0.25m Strut Extension	250	-	3
0.50m Strut Extension	500	-	5
1.00m Strut Extension	1000	-	9
1.50m Strut Extension	1500	-	13
2.00m Strut Extension	2000	-	17

Description	Closed (mm)	Open (mm)	Weight (kg)
Type A Cylinder	550	850	12
Type B Cylinder	780	1250	17
Type C Cylinder	1260	1950	22
Type D Cylinder	2000	3000	32



DOUBLE ACTING BUCKET PUMPS

- Intended to be used to extend and retract rams for braces and struts
- Used in conjunction with manhole braces and aluminium struts

SHORING FLUID

- Available in sealed 5L bottles



CONFINED SPACE EQUIPMENT

At GroundShore we offer a complete range of confined space safety equipment including gas monitors/detectors and confined space retrieval systems. We offer a full range of emergency escape equipment for all types of deep excavations.



DAVIT SYSTEM

TRENCH OR SHEET MOUNTED

LARGE UPPER DAVIT

Offset 19.5" to 29"

Height 58" to 67"

Weight 12kg

LARGE LOWER DAVIT

Height 52"

Weight: 8kg

BSEN 795 TYPE B

BARREL MOUNTING BRACKET

- Barrell mounts are utilised in conjunction with our trench mounted davit systems
- Opens to 127mm and closes down to fit trench sheets



DAVIT SYSTEM COUNTER BALANCE DAVIT SYSTEM

- 3 piece Counterweight system.
- Independently adjustable legs for level or unlevel ground.
- Weighs 118lbs.
- Weights are not included, but universal gym weights are suitable and can be supplied.
- 24 x 15kg weights provide 4:1 safety factor



STRETCHER

A robust, compact and lightweight stretcher. The flexible material combined to a smooth finish allows easy sliding and permits the stretcher to be rolled width ways or lengthways to facilitate transport. No webbing passes under the stretcher preventing damage whilst dragging. Strong handles around the stretcher allow it to be maneuvered by several rescuers.

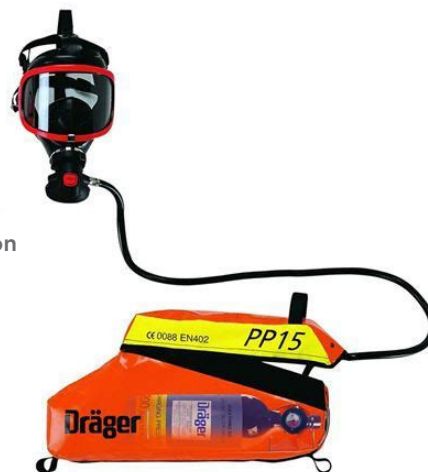
- Roll up stretcher stored and carried in backpack
- Available with comfort or vacuum mattress, or spinal splint with integral flotation insert
- Suitable for horizontal helicopter lift and rescue vertically to extricate casualty from limited access The stretcher may be hauled vertically or horizontally. The closure straps secure and allow the stretcher to mould around the casualty.



EMERGENCY ESCAPE BREATHING APPARATUS

DRÄGER PP15

- Constant flow Emergency Escape Breathing Apparatus
- Hood based positive pressure breathing device
- Simple to put on featuring practically automatic operation
- Equipped with a 15 minute supply of air
- Alarm whistle sounds before air supply is exhausted
- Flame retardant hood with a large visor for maximum peripheral vision



GAS DETECTORS

GS can provide both single gas and multigas monitors for personal monitoring and portable safety applications providing protection against a wide range of industrial gas hazards through MSA Portable Gas Detection Products

MSA ALTAIR 4X

- Confined Space Entry Monitor - large, easy to read top mount display for hands free observation
- +ve Safety™ giving a quick easy tri colour status indication
- 5 Gas Monitor - up to 5 gases in a compact and rugged design
- Single button operation and intuitive functionality reducing training time
- Reliable Li-ion battery, providing over 19hrs use from a 5hr charge
- Water and dust resistant to IP65 and IP67
- Specific and unique Pre-Entry mode
- Flexible and convenient options for bump testing and calibration



OUR CORE VALUES AND ETHOS

MISSION STATEMENT

“To Consistently provide the premium construction hire service, based on the highest standard of ethics, values, client and employee care thereby creating a better future.”

CORE VALUES AND ETHOS

Our core values are the key to our culture. At Groundshore, we carry out our business with the following values:

RELIABILITY

The core value of the organisation lies in professional and reliable staff who gives their best to provide high-quality service to meet different customer needs and to ensure the group’s success. GroundShore fulfil their promises to customers, employees and partners, and keep confidential any information concerning customers, partners and their companies.

COMMITMENT

GroundShore is committed to the success of each and every plant hire, guaranteeing quality from start to finish. By delivering striking services that leave lasting impressions, we aim not only to meet our clients’ expectations, but to also exceed them.

We are passionate about delivering the highest quality of service to our customers and are dedicated to providing exceptional value.

INNOVATION

We recognise that being at the forefront of construction is vital to delivering excellent service and therefore strive to be innovative and creative in leading the plant hire market. Getting it right first time, saves time and minimises disruption. Taking pride in what we do and carrying out work to the best of our ability. We always try to help by seeking solutions and being innovative.

Get in touch today!

REGIONAL OFFICES

GroundShore is run centrally from its head office located just off the M6 junction 17 in Sandbach. We have a London depot just off the M4 by Heathrow airport and a Bristol depot. We are currently working on opening 3 further depots, one in the Midlands, one in the North East and one in Ireland to cater for clients needs. We have in place professional staff to deal with the design and delivery of our range of equipment. Our expert team will work alongside your team to ensure we deliver the best service possible.

Head Office

Old Motorway Compound
Holmes Chapel Road
Sandbach
CW11 1SE

London Depot

Unit 1, Frogs Ditch Farm
Hayes, Middlesex
UB3 1RN

Bristol Depot

Old Sodbury
Bristol
BS37 6RR

North East Depot

Opening Soon

Ireland Depot

Opening Soon



t: +44 (0) 333 577 9111
e: enquiries@groundshore.co.uk

WWW.GROUNDSHORE.CO.UK

